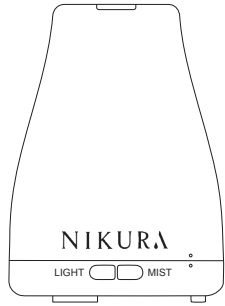


NIKURA



AROMA SPA DIFFUSER

English



INSTRUCTIONS FOR SAFE USE EN

- Before you use the devices, read carefully and keep the operating instructions described below. Always make sure that you properly handle the devices. Throughout this instruction manual, the term «device» refers to the diffuser and its accessories.
- Keep away from children and animals.
- Children must not play with this device. Cleaning and maintenance must not be performed by unsupervised children.
- This device can be used by children 8 years of age and older and by persons with limited physical, sensory or mental abilities or without experience or knowledge of the device, if they are properly supervised or if the instructions relating to the safe use of the device were given to them and the associated risks were understood.
- Keep and/or use the device away from any source of heat such as stoves, radiators, naked flames or heaters.
- If you notice a burning smell or the product shows other signs of significant malfunction, immediately disconnect the power cord from the electrical outlet. Wait until the burning smell dissipates, then contact your retailer.
- Do not bend, twist or pull the power cord, this may damage it and cause a fire or electrical shock hazard.
- Do not place heavy objects on the devices.
- Do not obstruct the diffuser output of your device.
- Do not drain the water from the side where the air outlet is

located.

- The device must only be powered using very low voltage for safety reasons, which corresponds to the device marking.
- The device may only be used with the power adapter provided.
- The pliable outer cord of the adapter cannot be replaced; in the event that the cord is damaged, the adapter needs to be discarded.
- If the pins of the plug part are damaged, the plug in the power supply unit must be discarded.
- Do not try to disassemble or modify the devices. You will be exposed to hazards and your parts and labour warranty would become invalid.
- Do not use the devices in areas that are smoky, humid, dusty, or subject to strong vibrations.
- Do not place the diffuser on an inclined or unstable piece of furniture. It could fall, break and cause injury.
- If the device falls, disconnect the power cord from the electrical outlet.
- Do not remove the cover while the unit is in use.
- Do not refill with water or essential oil/fragrance oil during use. Perform these operations only after unplugging your unit.
- Do not add too much water and respect the maximum filling level, using the mark indicated on the device. If there is any surplus, empty the excess and immediately wipe any plastic parts that may have come into contact with water and essential oil or fragrance oil with a soft cloth.
- Do not immerse the devices in water.
- Never use water at a temperature over 55°C
- Please use an adapter that supports 24V / 500mA.
- Do not use the devices near an open flame.
- The area around the humidifier should not be wet or humid. In case of humidity, lower the flow of the humidifier. If you cannot adjust the flow rate of the humidifier, use the humidifier intermittently. Do not allow absorbent materials such as rugs, curtains, drapes or tablecloths to get wet.
- Do not overfill the aroma spa diffuser. It could stain the furniture on which it is placed.

-When using the device, pay attention to the emission of hot water vapour.

-High humidity levels can lead to the growth of biological organisms in the environment.

Instructions for cleaning/descaling the appliance:

Unplug the device before handling or maintenance. Make sure that it has been emptied of any liquid or substance for diffusion.

Clean the water reservoir every three days.



Warning :

- Micro-organisms that may be present in the water or in the environment in which the unit is used or stored can grow in the water reservoir and be dispersed into the air, causing very serious health risks if the water is not replaced and the reservoir is not properly cleaned every three days.
 - Empty the water reservoir and refill it every three days. Before refilling, rinse the water reservoir under the faucet or clean it with cleaning products. Remove any scale, deposits or film which may have formed on the walls of the reservoir or its internal surfaces, and wipe down all these surfaces.
 - To descale the appliance, add white vinegar and a bit of water to the reservoir. Start the diffuser and let it run for a few minutes, then drain the water from the reservoir to remove excess limescale and essential oil or fragrance oil residue.
 - You can also use a cotton pad or cotton swab soaked in white vinegar to clean the reservoir and get rid of essential or fragrance oil's residue.
 - Never leave water in the reservoir when the device is not in use.
 - Empty and clean the humidifier before prolonged storage.
 - Clean the humidifier before its next use.
- #### General precautions for essential oil or fragrance oil:
- Only use substances recommended for diffusion in the device.
 - Using other substances may cause a toxic hazard or risk of fire.

-Essential oils and fragrance oils are active ingredients which must be used in moderation and in conformance with recommended amounts and diffusion times.

-Always follow the detailed precautions for the use of essential oils and fragrance oils. Contact us at support@nikura.com for advice.

-Carefully read the hazard and precautionary statements related to the pictograms.

-Wash your hands immediately after using essential oils or fragrance oils.

-Avoid direct contact with eyes, ears and mucous membranes.

-In case of allergies, and in particular respiratory allergies, exercise extreme caution in the use of essential oils or fragrance oils. The advice of a specialist is recommended. When seeking the advice of a physician, have the essential or fragrance oil's container and label available.

-Keep essential oils or fragrance oils away from air and light, as well as any source of heat or flame.



The crossed-out wheeled bin symbol affixed to the product or its accessories indicates that they are classified as electrical and electronic equipment.

As such, the European regulations require it is collected separately from other waste:

- by distributors, if an equivalent product is purchased,
- using the locally-available collection facilities (waste reception centre, separate collection, etc.).



In this way, you will be helping to reuse and recycle Waste Electrical and Electronic Equipment that could have potentially harmful effects on the environment and on human health.

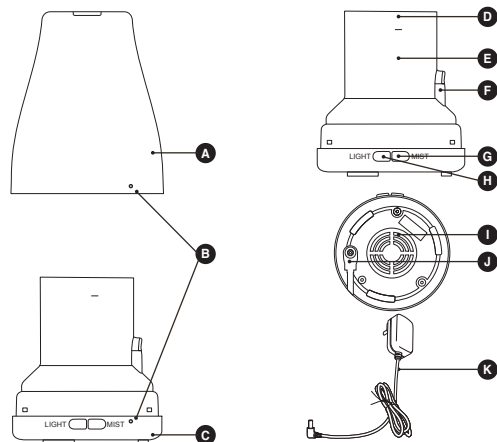


This appliance satisfies the European Community requirements concerning safety, hygiene, the environment and consumer protection.



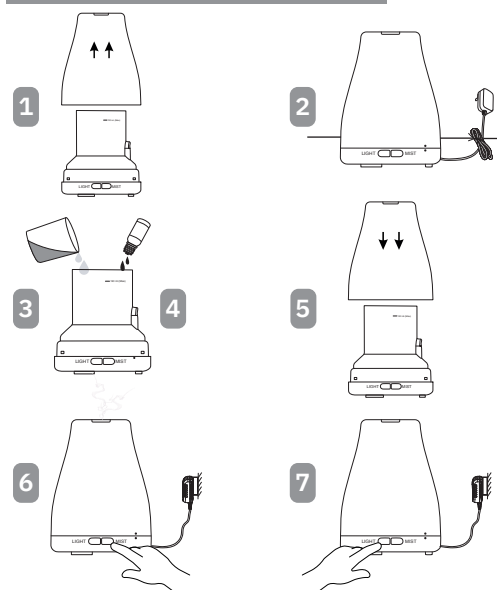
Class II equipment.

Description of parts



- A.- Lid.
 B.- Closing Marks.
 C.- Base.
 D.- Drain.
 E.- Water Reservoir.
 F.- Air Outlet.
 G.- Mist button.
 H.- Light button.
 I.- Air Inlet.
 J.- Plug.
 K.- AC adapter.

Installation



- 1) Take the lid off diffuser vertically.
- 2) Insert the plug into the base of the diffuser (do not plug the adapter into the main power source at this stage).
- 3) Use the water measuring cup to fill the water reservoir with tap water - do not exceed the maximum water level mark. Do not switch on the diffuser until the water reservoir is correctly filled and diffuser cover is properly in place.
- 4) Add 6 to 8 drops (**maximum**) of essential oil or fragrance oil to the water reservoir.
- 5) Place the diffuser cover back into place (covering the water tank) Plug the diffuser into the main power source.

6) Mist button:

- Press the Mist button once and the green light will come on in intervals (30 seconds of diffusion followed by 30 seconds pause before the cycle restarts).
- Press the Mist button a second time and the green light will turn red. This means that the mist will be continuously diffused.

- When you press the Mist button a third time, the mist will stop being diffused and the light will turn off.

- It is possible to stop the mist and light at any time by keeping the Mist button depressed.

7) Light button:

- Press on the Light button to activate changing colour mode.
- Press again to set it to the colour you want.
- Press again to return to changing colour mode.
- Press for 3 seconds to turn the light off.

Maintenance

- 1.- Make sure that your device has been switched off.
- 2.- Unplug the mains adapter from the mains socket; then disconnect the mains adapter from the base of your diffuser.
- 3.- Remove the lid.
- 4.- Empty all the water remaining in your diffuser without letting the water flow into the diffuser ventilation.
- 5.- Use a clean cotton swab or soft cloth to clean the inside of the diffuser. Remove any scale, deposit or film that may have formed on the walls of the reservoir or its internal surfaces using white vinegar (be careful not to press too hard on the ceramic disc; this element is fragile).

It is recommended that you clean the device every 3 days.

Technical features

Diffusion mode: Ultrasonic misting.

Diffusion power: up to 50 m².

Dimensions: Ø 100mm. x h 140 mm.

Power supply: AC 100~240 V / 50~60Hz – DC 24V 500mA.

Electrical power: 12W.

Tank capacity: 100 ml.

Accessories: Adapter + Instruction manual + Water measuring cup.

Troubleshooting

PROBLEM	PROBABLE CAUSE	SOLUTION
The unit tipped during operation and no longer works.	Liquid may have gotten into the unit's internal parts.	Immediately disconnect the power supply and drain the water, keep the unit upright in a well ventilated room for 3 days. Try restarting it.
The diffusion isn't working.	The power supply is not connected.	Plug in the power supply cord and press the on/off button.
	Water level is insufficient.	Add water to the reservoir.
The diffusion mode isn't working properly.	Overfilled water reservoir : exceeds 90 ml.	Drain off the excess water until its level is below the MAX line.
	The ultrasonic plate is obstructed.	Clean the ultrasonic plate according to the instructions in this manual.
The diffusion button is on, the air outlet is working, but no mist comes out.	An object is obstructing the air supply on the bottom of the diffuser.	Remove objects from under the diffuser.
	A drop of water is blocking the air intake inside the water tank.	Remove objects from under the diffuser. Remove the air intake cover and wipe the water off the top of the air intake.

NIKURA

Nikura Ltd

Unit 6, Tariff Road
 London, N17 0EB, United Kingdom
 + 44 (0)203 637 0946

www.nikura.com